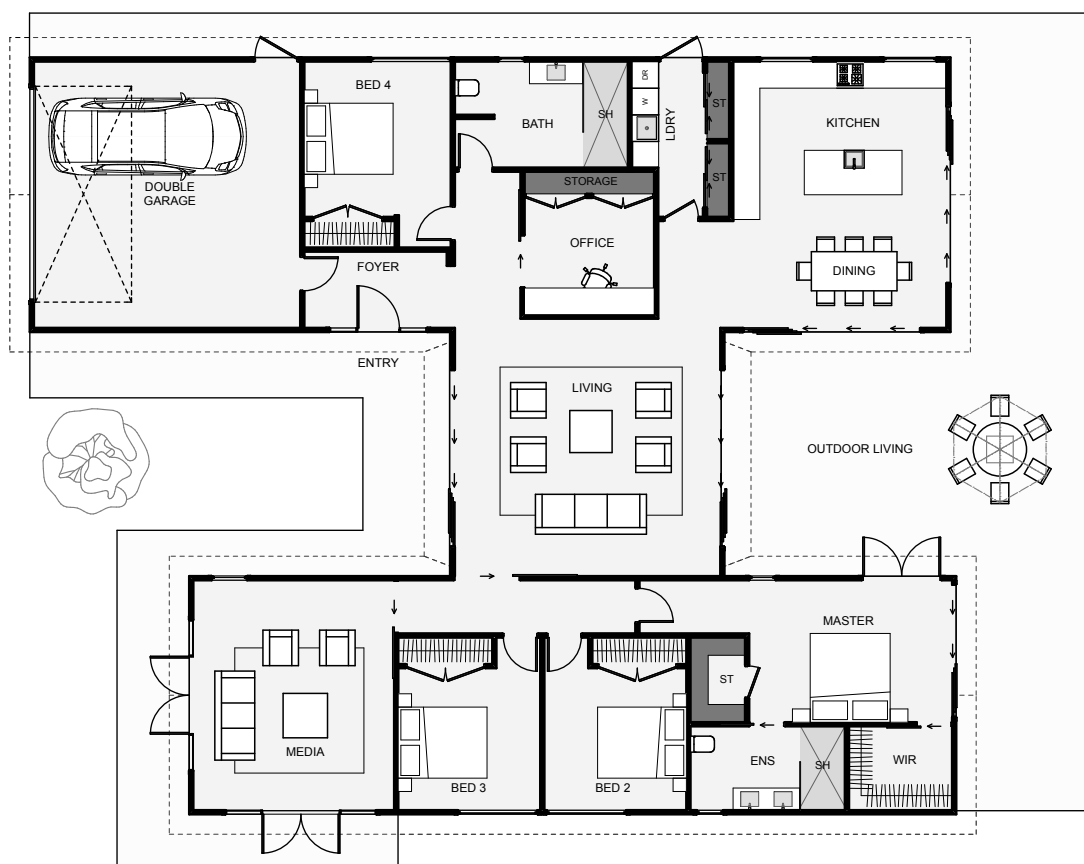




The Haven is one cool home. Thanks to the layout, little things like the one separate bedroom with direct bathroom access, (great for visitors), and an office close to the foyer, help make this home easy to live in. Other nice aspects include the dual living, (both with external access), the separate kitchen and dining plus the north facing master bedroom will make the thought of building exciting!



Floor Area: 254m²

 2 |
  4+ |
  2 |
  2 |
  20.7m |
  17.0m



INGOLD
BUILDING LTD

Craig Ingold- Managing Director
 m.0272682754 | ah.03 3078223 | e.craig@ingoldbuilding.co.nz
 57 Hepburns Rd, 6RD, Ashburton | www.ingoldbuilding.co.nz