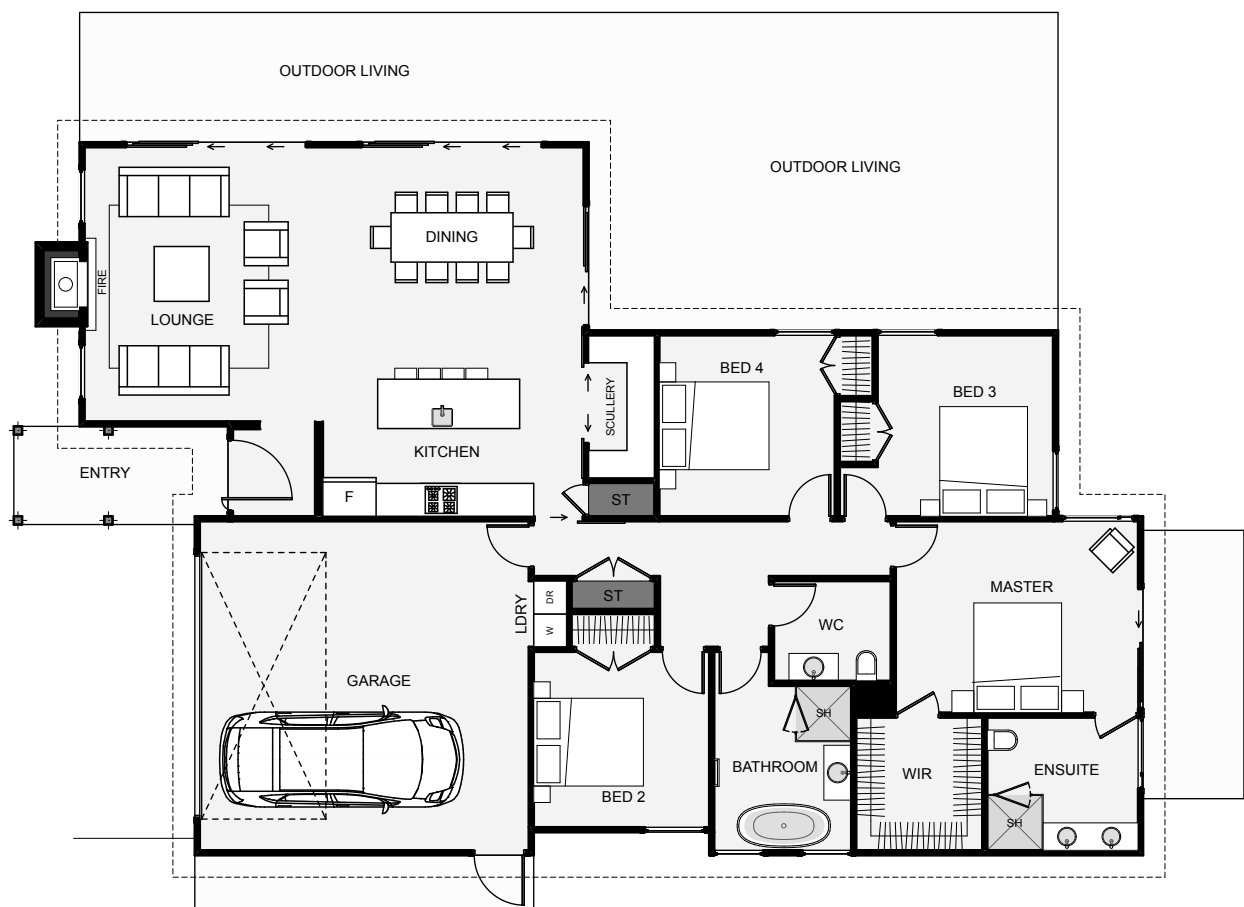




This home oozes with timeless street appeal and character, the kind of home that doesn't date. The home is also surprisingly small in size with no downsides. The home includes a good size scullery, four bedrooms, a decent master with a large walk-in wardrobe and ensuite with a dual vanity, plus some fine exterior styling that will last a lifetime!



Floor Area: 195m²

 2 |  4 |  2 |  1 |  20.1m |  13.0m